

# Flexlock Invisible 1.0

Mifare 13.56 MHz/EM 125 kHz

- Compact lock with RFID technology for inside mounting
- Can be used with the property's already existing pass system
- Can be used for drawers, sliding doors, pull-out storages and all kinds of storage with doors.
- Can be mounted on wood, laminate and sheet metal doors (conductive materials require external antenna)
- Battery powered
- Low standby
- Easy to program without computer and software
- Easy to install

## Unique lock system for all interior fittings

Electronic lock with RFID technology for inside mounting in storages. A key card allows access to all the units the user is authorised to access. This means the same card can be used to access both the work station and various storage units.

The lock can be programmed with a number of functions to limit the number of users or be time-controlled. It can easily be mounted to furniture at the time of manufacture, or retrofitted to existing interior fittings. The lock is battery powered and no external power is required. Available to Mifare 13.56 Mhz or EM 125 kHz.

Lock plates are available in different designs to fit all types of storages:

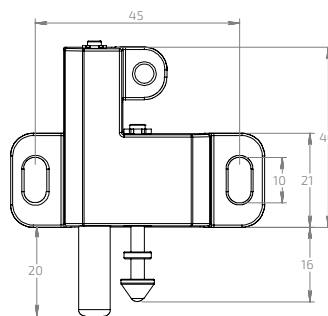
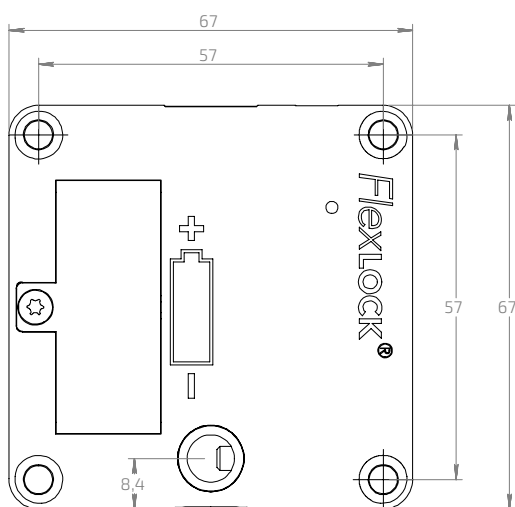
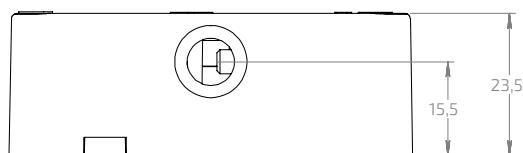
Lock plate A: for doors and drawers (catapults 20 mm)

Lock plate B: for sliding doors or pull-out drawers

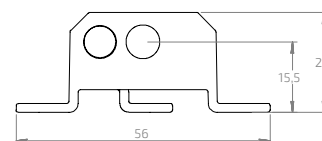
Lock plate C: for doors and drawers (catapults 40 mm)

# Technical Specifications

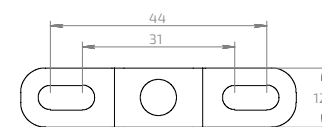
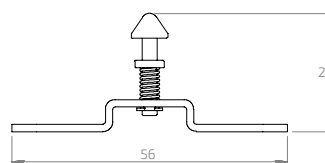
## FLEXLOCK INVISIBLE



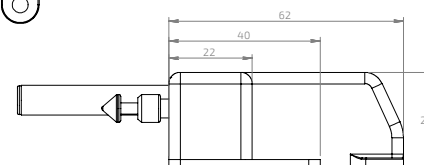
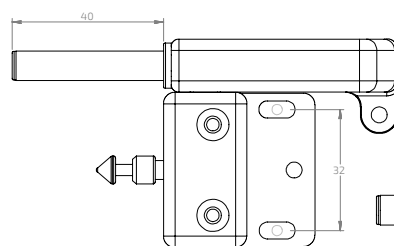
LOCK PLATE A



LOCK PLATE B



LOCK PLATE C



Size	67 x 67 x 23 mm
Weight	54 g (without battery)
Temperature, surrounding	+17° till +30° C
Humidity	20% to 75% relative humidity, non-condensing
Battery	For battery life and software to work according to specification requires a Flexlock battery which is provided by Swedstyle or your Flexlock dealer
HF emission	Max 20dBµA vid 10m
IP-code	IP 20
Number of users	Mifare: max 200 users/EM: max 45 users
Battery lifespan	Mifare: 3 years or 30 000 openings/EM: 4 years or 40 000 openings
RFID std	RFID std 13,56 MHz, ISO/IEC 14443 A & B, ISO/IEC 180092, ISO/IEC 15693
Compatible with	Mifare Classic 1k Mifare Classic 4k Mifare DESFire Mifare Plus, Mini, Ultra-Light HID iClass 2k, iClass 4k, iClass SE 2k, 32k, Prepared for NFC. 125 kHz EM 4x02
Reading distance	< 25 mm with Swedstyle-cards, other cards or tags may have shorter and varied reading distance.
Suitable materials	Nonconductive materials such as: wood, plastic, laminate
Unsuitable materials	All kinds of metals or conductive materials
Lock standard	SS-EN 16014:2011
Electrical safety	IEC/EN 60 950-1 and IEC/EN 62 233
EMC and EMR radio test	ETSI 300 330-1/-2 and 301 489-1/-3

FlexLock is CE marked and meets the requirements, see separate CE declaration.

More info at [www.flexlock.se](http://www.flexlock.se)

Flexlock is a product developed and marketed by Swedstyle.

 SWEDSTYLE

Swedstyle AB.  
Box 171, SE-567 24 Vaggeryd, Sweden  
[info@swedstyle.se](mailto:info@swedstyle.se)  
+46 393-363 60  
[www.swedstyle.com](http://www.swedstyle.com)